

6th Keyhole & Endonasal Surgery Course FOR BRAIN, PITUITARY & SKULL BASE TUMORS WITH HANDS-ON MICRODISSECTION

February 2-4, 2012

at
Medical Innovations and Training Institute
Las Vegas, Nevada

COURSE DIRECTORS

Daniel F. Kelly, MD

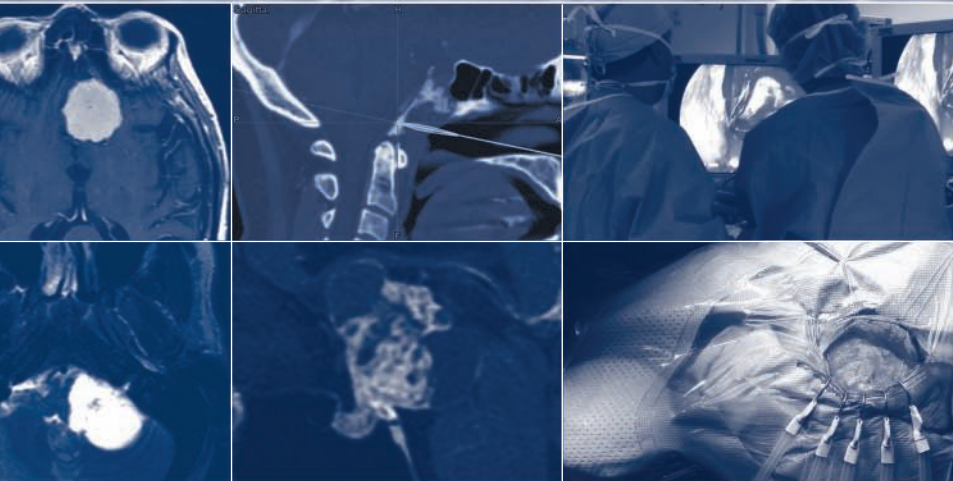
Director, Brain Tumor Center
Saint John's Health Center
John Wayne Cancer Institute
Santa Monica, California

Charlie Teo, MD, MBBS, FRACS

Director, Centre for Minimally Invasive
Neurosurgery • Sydney, Australia

Ricardo L. Carrau, MD, FACS

Professor, Department of Otolaryngology-
Head & Neck Surgery
OSUCCC - James • Columbus, Ohio



SPONSORED BY



**Saint John's
Health Center**

Breakthrough Medicine. Inspired Healing.™



**JOHN WAYNE
CANCER INSTITUTE**
at Saint John's Health Center

www.endokeyhole.org • www.brain-tumor.org

6th Keyhole & Endonasal Surgery Course

FOR BRAIN, PITUITARY & SKULL BASE TUMORS

WITH HANDS-ON MICRODISSECTION

COURSE TOPICS

- Keyhole approaches for brain, pituitary and skull base tumors including the endonasal endoscopic, supraorbital, minipterional, retromastoid and infratentorial supracerebellar routes
- Decision making in keyhole approach selection for skull base meningiomas, craniopharyngiomas, chordomas, pituitary adenomas, sinonasal carcinomas and intra-axial brain tumors
- Complication avoidance and CSF leak repair techniques in keyhole surgery
- 3-D sinonasal, skull base and intracranial anatomy

COURSE DESCRIPTION

This 3-day CME course will consist of didactic sessions and hands-on micro-dissection of fresh-frozen cadavers focusing on minimally invasive keyhole surgical approaches including the endonasal endoscopic, supraorbital, minipterional, retromastoid and infratentorial supracerebellar routes. Indications, technical nuances, anatomical principles and methods of complication avoidance will be discussed. Additional topics will include instrumentation advances and CSF leak repair techniques.

COURSE OBJECTIVES

At the conclusion of this activity, participants will be able to:

1. Understand the indications, technical nuances and limits of keyhole approaches including the supraorbital, minipterional, retromastoid and infratentorial supracerebellar approach.
2. Understand sinonasal and skull base surgical anatomy.
3. Describe indications for and technical nuances of the endonasal endoscopic approach to the skull base and brain (sella, suprasellar, planum, cavernous sinus, clivus, paranasal sinuses).
4. Describe methods of CSF leak repair and complication avoidance in endonasal endoscopic surgery and in keyhole craniotomies.

TARGET AUDIENCE: Neurosurgeons and Otolaryngologists

Daniel F. Kelly, MD

Director, Brain Tumor Center
Saint John's Health Center
John Wayne Cancer Institute
Santa Monica, California

Charlie Teo, MD, MBBS, FRACS

Director, Centre for Minimally
Invasive Neurosurgery
Sydney, Australia

Ricardo L. Carrau, MD, FACS

Professor, Department of
Otolaryngology - Head
& Neck Surgery
OSUCCC - James
Columbus, Ohio

Faculty

Felice Esposito, MD, PhD

Division of Neurosurgery
Division of Maxillo-Facial Surgery
Università degli Studi di Napoli Federico II
Napoli, Italy

Juan C. Fernandez-Miranda, MD

Assistant Professor
Department of Neurological Surgery
University of Pittsburgh School of Medicine
Pittsburgh, Pennsylvania

Chester F. Griffiths, MD, FACS

Assistant Clinical Professor, Dept. of
Surgery, Division of Head and Neck
Surgery & Dept. of Family Practice
David Geffen School of Medicine at UCLA
Los Angeles, California

Nikolai J. Hopf, MD, PhD

Professor and Chairman
Department of Neurosurgery
Klinikum Stuttgart
Stuttgart, Germany

Amin B. Kassam, MD

Professor, Department of Neurosurgery
University of Ottawa
Ottawa, Ontario
Canada

Howard R. Krauss, MD

Clinical Professor of Ophthalmology
and Neurosurgery
David Geffen School of Medicine at UCLA
Los Angeles, California

Nancy McLaughlin, MD, PhD

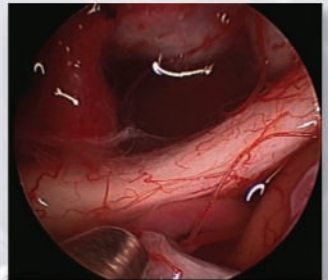
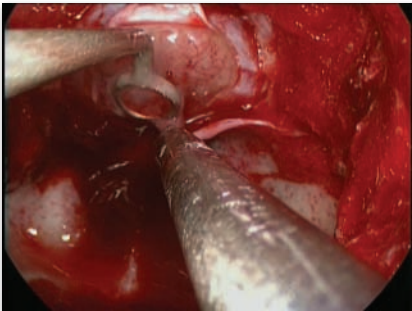
Neurovascular Fellow
Department of Neurosurgery
David Geffen School of Medicine at UCLA
Los Angeles, California

Peter Nakaji, MD

Professor of Neurosurgery
Creighton University School of Medicine
Director, Division of Minimally Invasive
Neurosurgery
Barrow Neurological Institute
Phoenix, Arizona

Daniel M. Prevedello, MD

Assistant Professor
Department of Neurological Surgery
OSUCCC - James
Columbus, Ohio



AGENDA

THURSDAY, FEBRUARY 2, 2012

Keyhole Craniotomy Approaches For Brain & Skull Base Tumors

- 7:30 a.m. Registration and Continental Breakfast
- 8:00 Introduction and Keyhole Concept Overview – *Daniel Kelly, Charlie Teo*
- 8:30 Supra-Orbital – *Charlie Teo*
- 9:00 Minipterional and Subtemporal Approach – *Nikolai Hopf*
- 9:30 Retromastoid and Infratentorial Supracerebellar – *Peter Nakaji*
- 10:00 Break
- 10:30 Keyhole Craniotomy for Intra-Axial Brain Tumors
Daniel Kelly, Nancy McLaughlin
- 11:00 Skull Base 3-D Anatomy – *Juan Fernandez-Miranda*
- 11:30 Keyhole Surgical Principles & Instrumentation – *Charlie Teo*
- 12:00 p.m. Lunch Lecture: Neuro-Ophthalmology 101– *Howard Krauss*
- 1:30 **Lab #1:** Supraorbital, Minipterional, Retromastoid, Infratentorial
Supracerebellar
- 5:30 End of Day 1
- 6:00 Welcome Reception**

FRIDAY, FEBRUARY 3, 2012

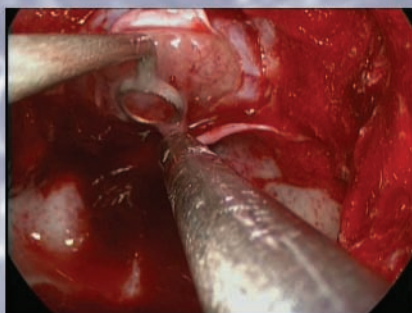
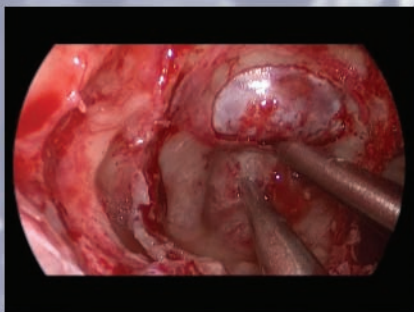
Endonasal Endoscopic Approach for Pituitary and Parasellar Skull Base Tumors

- 7:30 a.m. Continental Breakfast
- 8:00 Endonasal Endoscopic Surgery Essentials – *Ricardo Carrau*
- 8:30 Sinonasal and Parasellar Endoscopic 3-D Anatomy
Juan Fernandez-Miranda
- 9:00 Endoscopic Approach to Sellar Lesions – *Felice Esposito*
- 9:30 Maximizing Pituitary Tumor Removal and Pituitary Gland Preservation
Daniel Kelly
- 10:00 Break
- 10:20 Expanded Approach for Suprasellar and Planum Tumors – *Daniel Prevedello*
- 10:50 Expanded Approach for Infrasellar and Retroclival Tumors
Amin Kassam
- 11:20 Endonasal CSF Leak Graded Repair Strategy – *Daniel Kelly*
- 11:40 Nasoseptal and Other Alternative Flaps for Skull Base Reconstruction
Ricardo Carrau
- 12:10 p.m. Lunch Lecture: Endonasal Endoscopic Skull Base Surgery:
A 360° Perspective – *Amin Kassam*
- 1:30 **Lab #2:** Endonasal Approach to Sella and Planum; Naso-Septal Flap
- 5:30 End of Day 2
- 7:00 Course Dinner**

SATURDAY, FEBRUARY 4, 2012

Approach Selection, Pitfalls and Complication Avoidance

- 7:30 a.m. Continental Breakfast
- 8:00 Endonasal Approach to Meckel's Cave and Infratemporal Fossa
Daniel Prevedello, Ricardo Carrau
- 8:30 Meckel's Cave and Infratemporal Fossa 3-D Anatomy
Juan Fernandez-Miranda
- 9:00 Rhinologic Considerations of Endonasal Surgery Including Pre and Post Operative Endonasal Care – *Chester Griffiths*
- 9:30 Break
- 10:00 Brain Port for Intra-Axial Brain Tumors – *Amin Kassam*
- 10:30 Approach Selection and Complication Avoidance: Cases to Remember!
All Faculty
- 12:00 p.m. Lunch Lecture: History of Minimally Invasive Brain Surgery
Nikolai Hopf
- 1:30 **Lab #3:** Endonasal Endoscopic Approach to Clivus, Meckel's Cave and Approach Comparisons
- 4:30 Adjourn



HOTEL ACCOMMODATIONS

A block of rooms has been reserved at:



THE COSMOPOLITAN™
of LAS VEGAS

The Cosmopolitan of Las Vegas

3708 Las Vegas Blvd. South
Las Vegas, NV 89109
1-877-551-7772
www.cosmopolitanlasvegas.com

Cut-off date: January 6, 2012



GREEN VALLEY RANCH™
RESORT | SPA | CASINO
LAS VEGAS

Green Valley Ranch Resort and Spa

2300 Paseo Verde Parkway
Henderson, NV 89052
702-617-7777
www.greenvalleyranchresort.com

Cut-off date: January 2, 2012

Mention 6th Endonasal Surgery Course to get the special rate.

COURSE LOCATION

Medical Innovations and Training Institute

1534 W. Warm Springs Road
Henderson, Nevada
702-233-6484

AIRFARE

Cooks Travel

Cindy Miller
cindy@trtravel.net
800.628.2665, extension 106

Transportation will be provided from the Cosmopolitan and Green Valley Ranch hotels to the course each day.

REFUNDS

Cancellations must be received in writing by December 15, 2011 and will be subject to a \$200 processing fee. No refunds will be given after that date. Academic Event Management reserves the right to cancel, discontinue or reschedule this program at any time and will assume no financial obligation to the registrants in the event of a cancellation. In case of cancellation, registration fees will be refunded in full.

ACCREDITATION



Saint John's Health Center (SJHC) is accredited by the Institute for Medical Quality/California Medical Association to provide continuing medical education for physicians. SJHC takes responsibility for the content, quality and scientific integrity of this CME activity. SJHC designates this educational activity for a maximum of twenty-six (26) AMA PRA Category 1 Credits™. Physicians should only claim credit commensurate with the extent of their participation in the activity. This credit may also be applied to the CMA Certification in Continuing Medical Education.

ACKNOWLEDGEMENT

This course is supported in part by educational grants from the following companies at press time: Stryker, Synthes Anspach, Karl Storz Endoskope, Mizuho America Inc., KLS Martin Group, NICO Corporation, Biomet Microfixation.

DISCLOSURE STATEMENT

The FDA has issued a concept paper which classifies commercial support of scientific and educational programs as promotional unless it can be affirmed that the program is "truly independent" and free of commercial influence. In addition to independence, the FDA requires that non-promotional, commercially supported education be objective, balanced, and scientifically rigorous. The policy further states that all potential conflicts of interest of the CME staff and faculty be fully disclosed to the program's participants. In addition, Accreditation Council for Continuing Medical Education policy now mandates that the sponsor adequately manages all identified potential conflicts of interest prior to the program. We, at Saint John's Health Center, fully endorse the letter and spirit of these concepts.

REGISTRATION

COURSE LOCATION

Medical Innovations and Training Institute
1534 W. Warm Springs Road Henderson, Nevada

TUITION

\$2,500

Space is limited! Please print clearly.

SPECIALTY

DEGREE

NAME (FIRST, MIDDLE, LAST)

ADDRESS

CITY

STATE

ZIP

(AREA CODE) BUSINESS PHONE

(AREA CODE) BUSINESS FAX

EMAIL

PAYMENT

- Check enclosed payable to: **Academic Event Management**
 Visa MasterCard Discover American Express

Card Number

Expiration

Signature

Send completed enrollment form to: **Academic Event Management**

ONLINE

www.academiceventmanagement.com

FAX

805.494.1103

PHONE

805.300.9154

MAIL

1396 Rancho Lane
Thousand Oaks, CA 91362

