

INTRODUCING

"6 Pillar Approach"

Parafascicular Surgery of the White Matter:

Access & Cannulation to Intraaxial Subcortical White Matter Pathology

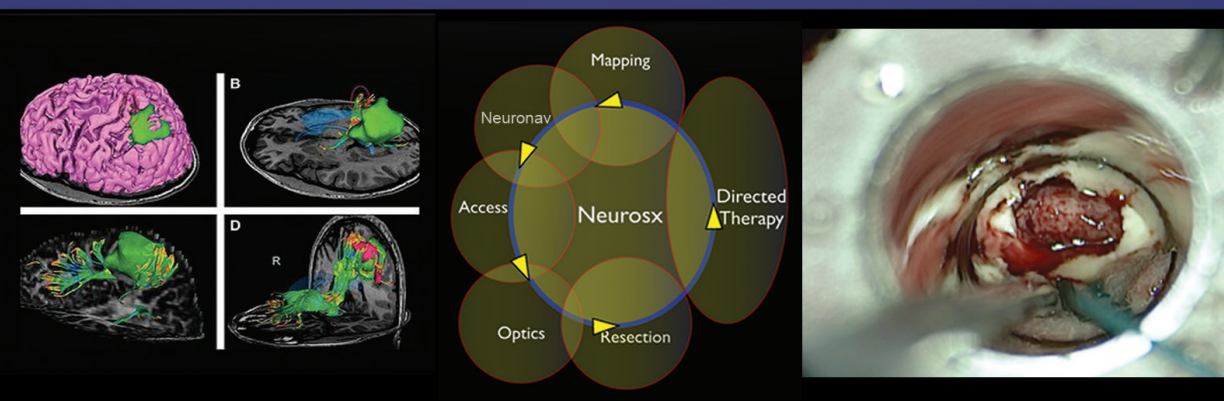
WITH EMPHASIS ON

Economic Resource Optimization Through Surgical Biometrics

December 6-7, 2013

Science Care

2020 W Melinda Lane • Phoenix, Arizona



***The 6 Pillar Approach for Comprehensive
Management of Subcortical Lesions
Parafascicular Surgery of the White Matter***

COURSE DIRECTOR

Amin B. Kassam, MD, FRCS(c)

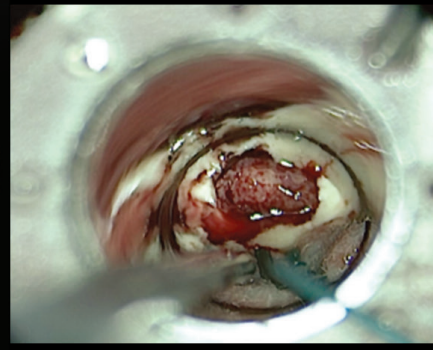
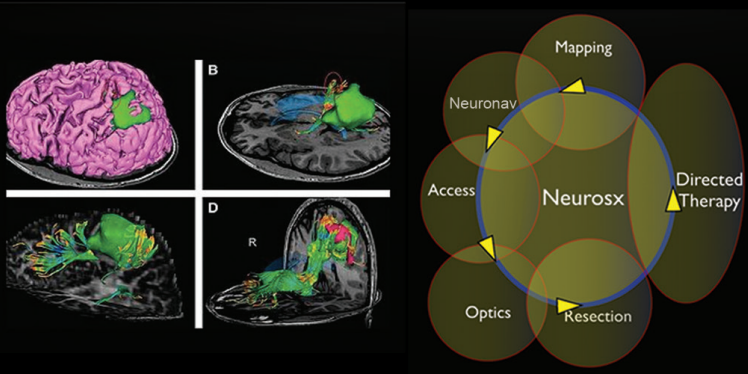
Professor of Neurosurgery

University of Ottawa

Ottawa, Ontario Canada

www.360-mind.com





COURSE DESCRIPTION

The 6 Pillar Approach is the result of a recent convergence of technologies to manage abnormalities affecting the intraaxial subcortical white matter space. This confluence of technologies has led to development of minimally invasive strategies via progressively smaller surgical corridors to reach and treat abnormalities in a targeted manner. Integration of these technologies is driven by a need to establish clinical and economic value in the delivery of precise targeted treatment in an efficient manner. This value is articulated through **Surgical Biometrics**.

While individual techniques and technologies have been in existence, the field has evolved to a stage where integration of these technologies into a systems approach is needed to realize the full potential of each disparate component. This course takes **The 6 Pillars** (Image Interpretation & Trajectory Planning, Navigation, Optics, Access & Cannulation, Resection and Targeted Therapy/Neoadjuvant) and offers a **System Approach**. The participant will be exposed systematically to each of these Pillars, in an effort to build a personalized system that will create a template/guide for selecting the approach and technology required to treat the specific lesion in a targeted fashion.

Specifically, the course will cover the indications, limitations and surgical techniques that comprise **The 6 Pillar Approach** for an evolving field within the intraaxial subcortical **parafascicular** surgery of the white matter. Technologies such as white matter image interpretation & trajectory planning/tractography, brain port access & cannulation systems and the **exoscope** (not endoscope) optics platform will be discussed. Our faculty will present the technical nuances and technological requirements of these surgeries, using a modular anatomical system that can be translated to the dissection laboratory. The course comprises a sequence of complementary didactic lectures, prosections, simulation planning and 3-D anatomical reviews. A recorded surgical demonstration of **The 6 Pillar Approach** for **parafascicular** surgery of the white matter will be shown and participants may interact with the surgeons and other members of the faculty.

Finally, given the health care economic environment there will be an additional focus on **Surgical Biometrics**. This is a rapidly emerging field that focuses on the impact and value added from surgical technologies. The participant will be exposed to the factors that affect surgical efficiency, patient flow, and impact on health system economics. This will allow for a critical assessment of the value added by any technology into a tangible outcome which is a critical step to the Value Analysis Process within every Healthcare System.

The Course Features a Hands-on Simulation Lab Session.

TARGET AUDIENCE: Neurosurgeons, Neuroradiologists and Neurologists interested in developing further knowledge of subcortical intraaxial space and white matter tractography as well as an interest in surgical biometrics and resource optimization.

COURSE OBJECTIVES

At the conclusion of this activity, participants should be able to:

Parafascicular Surgery of the Subcortical Intraaxial Space:

1. **Image Interpretation & Trajectory Planning**

- Appraise and integrate the evolving technology platforms of white matter fascicular image interpretation & trajectory planning and subcortical anatomy (diffusion tensor imaging)
- Apply the new concepts/platforms in cellular imaging

2. **Navigation**

- Demonstrate techniques/nuances critical to subcortical trajectory planning
- Analyze the current limitations of Navigation systems for subcortical planning
- Examine the evolving platforms to significantly enhancing trajectory and targeting

3. **Access & Cannulation**

- Assess the principles and techniques of optimum cannulation pathways – **Parafascicular Surgery**
- Analyze the differences between cannulation of firm and soft tumors, primary and metastatic lesions

4. **Optics**

- Interpret the limitation of current optics platforms (microscope/endoscope)
- Analyze the advantages (depth of field and tissue differentiation) of the Exoscope

5. **Resection**

- Interpret the value of automation during resection to optimize safety and efficiency
- Use the requirements of automation for MIS corridors
- Apply the techniques of automation to improve performance curves and efficiency during resection phase for both MIS and conventional craniotomy corridors

6. **Regenerative Medicine**

- Examine the complementary role of cytoreduction towards more definitive neoadjuvant therapy
- Apply techniques to optimize tissue capture and viability
- Choose the principles and limitations of current drug therapies and delivery systems
- Examine the current immune targeted molecular treatments available and the potential ability to deliver these in situ – **“The 6th Pillar”**
- Interpret the principles of progenitor cell targeted therapy

7. **Salvage Approaches**

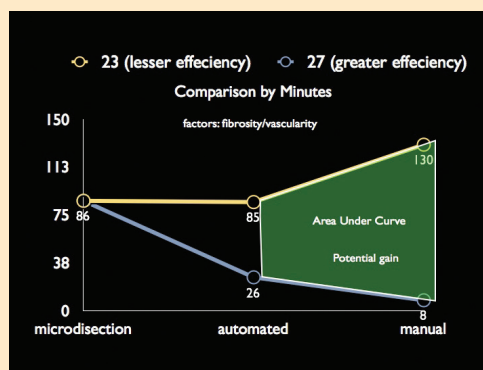
- Examine the limitations of corridor brain port approaches
- Demonstrate salvage strategies in the event of intraoperative challenges

8. **ICH (Intracerebral Hemorrhage)**

- Interpret the applications and techniques for ICH
- Analyze the role of early **parafascicular** surgery for ICH
- Assess the biological and economic value of early surgical intervention
- Interpret the value of the 6 pillar **parafascicular** approach for ICH in comparison to other forms of surgical interventions

Surgical Biometrics

9. • Examine the efficiency factors that impact **Surgical Biometrics** analysis
10. • Evaluate the resource needs for translation of technology into clinical practice and how to articulate this within the value analysis process within your Healthcare System
11. • Evaluate your institution's capital acquisition process



AGENDA

Friday, December 6, 2013

7:00 am Registration and Continental Breakfast

7:30 Welcome and Introduction

A Systems Approach: Principles Integrating the 6 Pillars for Parafascicular White Matter Minimally Invasive Subcortical Access & Cannulation

Amin B. Kassam, MD, FRCS(c)

9:15 Break

9:30 **Recorded Surgery: Subcortical Approach –**

Commentary: Amin B. Kassam, MD, FRCS(c)

Review and Discussion: Application of Pillars in Clinical Practice – Faculty

12:30 pm Lunch

1:00 **Pillar 1: Principles of White Matter Image Interpretation & Trajectory Planning and Anatomy – Amin B. Kassam, MD, FRCS(c)**

1:45 **Pillar 2: Integration with Navigation: Nuances of Trajectory Planning/Optimization – Amin B. Kassam, MD, FRCS(c)**

2:30 Break

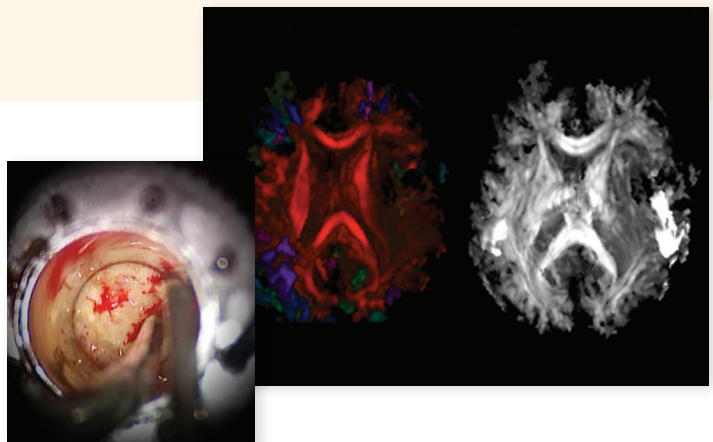
2:45 **Pillar 3: Principles and Pitfalls of Cannulation – The Lessons Learned**
Amin B. Kassam, MD, FRCS(c)

3:45 **Introduction to Lab 1 – Planning Trajectories, Access & Cannulation**

4:00 **Lab 1 – Simulation and Hands-on Workshop – Planning Trajectories, Access & Cannulation**

5:30 End of Day 1

6:30 Course Dinner



AGENDA

Saturday, December 7, 2013

7:00 am Continental Breakfast

7:30 **Pillar 4: Optics: Understanding the Advantages of Existing and Evolving Optics Platforms** – *Amin B. Kassam, MD, FRCS(c)*

- Microscope
- Endoscope
- Exoscope
- 3-D platforms
- Role of Non-optic Platforms

8:30 **Pillar 5: Optimizing Efficiency and Precision During all Phases of Resection – Impact of Automation and the Lessons Learned from Ophthalmology**
Amin B. Kassam, MD, FRCS(c)

- Ablative Energy Sources
- Automated Mechanical Instrumentation
- Manual Mechanical Instrumentation

9:30 **Introduction to Lab 2**

9:45 **Lab 2** – Simulation and Hands-on Workshop – Resection through Port Systems

11:45 **Introduction to MIS ICH Application Utilizing the Pillar Approach**
Amin B. Kassam, MD, FRCS(c)

12:45 pm Lunch

1:00 **Surgical Biometrics 101: Operative Efficiency and Precision Profiles – The Voice of Change!** – *Amin B. Kassam, MD, FRCS(c)*

1:45 **Surgical Biometrics 102: Principles of Value Added Analysis & Hospital Efficiency/Patient Flow** – *Amin B. Kassam, MD, FRCS(c)*

2:30 **Introduction to Lab 3**

2:45 **Lab 3** – Simulation and Hands-on Workshop

- A. Pillar 1: Pre Planning & Image Interpretation & Trajectory Planning**
- B. Pillar 2: Navigation**
- C. Pillar 3: Optics**
- D. Pillar 4: Access & Cannulation**
- E. Pillar 5: Resection**

4:00 **Pillar 6: Regenerative Medicine and Tissue Harvest – Primer on Existing Pharmacotherapy and Progenitor/Stem Cell Therapy** – *Amin B. Kassam, MD, FRCS(c)*

5:30 Course Adjourns

COURSE LOCATION



Science Care

2020 W. Melinda Lane • Phoenix, AZ 85027

800-590-8132

Local Airport

Sky Harbor International Airport

Distance from hotel: 22 miles

Drive time: 28 minutes

A block of rooms has been reserved at:

The Westin Kierland Resort & Spa

6902 E. Greenway Parkway | Scottsdale, Arizona 85254

M 602.349.4716 | F 480.624.1350 | www.kierlandresort.com

HOTEL RESERVATIONS

Call **1-480-624-1000** or **800-354-5892** and mention the "6 Pillar Course" to get a special rate of \$169 per night plus taxes. Cutoff date to get the special rate is November 5, 2013.

Transportation will be provided each day from the Westin Kierland to the course.

ACCREDITATION



In support of improving patient care, Creative Educational Concepts, Inc. (CEC) is accredited by the American Nurses Credentialing Center (ANCC), the Accreditation Council for Pharmacy Education (ACPE), and the Accreditation Council for Continuing Medical Education (ACCME), to provide continuing education for the healthcare team.

CEC designates this live educational activity for a maximum of **18.75 AMA PRA Category 1 Credits™**. Physicians should claim only the credit commensurate with the extent of their participation in the activity.

REFUNDS

No refunds will be given if a registration is cancelled.

Academic Event Management reserves the right to cancel, discontinue or reschedule this program at any time and will assume no financial obligation to the registrants in the event of a cancellation. In case of cancellation, registration fees will be refunded in full.

Attire: Business Casual.

ACKNOWLEDGEMENT

This course is supported in part by educational grants from the following companies at press time: KARL STORZ Endoscopy-America, KLS Martin Group, NICO Corporation, Stryker.

Use of the NICO BrainPath is limited to the following indication for use:

To provide access and visualization of the surgical field during brain and spinal surgery.

REGISTRATION

The 6 Pillar Approach for Comprehensive Management of Subcortical Lesions

December 6-7, 2013

TUITION: \$1,900

TEAM OF 2: \$3,400

Space is limited! Please print clearly.

SPECIALTY

DEGREE

NAME (FIRST, MIDDLE, LAST)

ADDRESS

CITY

PROVINCE/STATE

POSTAL/ZIP CODE

(AREA CODE) BUSINESS PHONE

(AREA CODE) BUSINESS FAX

EMAIL

PAYMENT

- Check enclosed payable to: **Academic Event Management**
 Visa MasterCard Discover American Express

Card Number

Expiration

Signature

Send completed enrollment form to: **Academic Event Management**

ONLINE

www.academiceventmanagement.com

FAX

805.494.1103

PHONE

805.300.9154

MAIL

1396 Rancho Lane
Thousand Oaks, CA 91362

