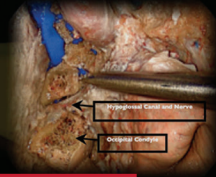
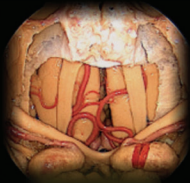


**May 29-May 31, 2014**  
**Columbus, Ohio**



# State-of-the-Art Endoscopic Skull Base Surgery

A HANDS-ON COURSE

THE OHIO STATE UNIVERSITY COMPREHENSIVE CANCER CENTER –  
JAMES CANCER HOSPITAL AND SOLOVE RESEARCH INSTITUTE

## COURSE DIRECTORS

Ricardo L. Carrau, MD, FACS

Bradley A. Otto, MD

Daniel M. Prevedello, MD

**EXPANDED  
FORMAT**  
Including  
Pre-Course  
Video  
Lectures

SPONSORED BY

# The James



**THE OHIO STATE UNIVERSITY**  
COMPREHENSIVE CANCER CENTER

## COURSE DESCRIPTION

Responding to the increased familiarity with endonasal endoscopic skull base surgery, we have modified the program to start at a higher level of expertise, and to promote discussions related to treatment algorithms of specific diseases. However, we recognize the value of refreshing basic concepts; and that our course caters to participants with a variety of levels of training and experience. Therefore, we will provide the participants with a series of video-lectures and video-prosections to fulfill these needs. This video-lecture series will allow the participants to enjoy the benefits of both a traditional lecture-style course based on anatomic and technical concepts, and a course with a new interactive format emphasizing decision-making and disease-oriented discussions. Participants will in fact enroll in two courses, a home study course and the hands-on course without additional costs.

### The course comprises:

1. Pre-course video-lectures addressing the basic principles of endoscopic skull base surgery, anatomy of the sinonasal tract and skull base, and basic surgical technique and instrumentation. These will be provided to registered participants one month prior to the course, as the program will start at a level that presumes familiarity with these principles.
2. Anatomical prosections (videos will be provided one month prior to the course).
3. Laminated dissection manual (a digital version will be provided one month prior to the course)
4. Sequence of complementary didactic lectures, round tables and panel discussions (open format with audience participation), 3-D anatomical reviews and hands-on cadaveric dissection.
5. Live surgery will be transmitted directly to the auditorium where the participants may interact with the surgeons and other members of the faculty.

## COURSE OBJECTIVES

### At the conclusion of this activity, learners should be able to:

1. Describe the anatomic relationships of the sinonasal tract, orbit and ventral skull base from the endoscopic perspective
2. Discuss the indications and limitations of endoscopic endonasal surgery of the skull base, pituitary fossa, orbit and craniocervical junction
3. Identify how to avoid and treat complications of endoscopic endonasal surgery of the skull base, pituitary fossa, orbit and craniocervical junction
4. Describe the anatomic relationships and surgical exposure afforded by the transpterygoid approach
5. Describe the relative anatomical exposures of the endonasal versus the open traditional approaches
6. Identify how to avoid and treat complications of endoscopic skull base surgery

## TARGET AUDIENCE

Neurosurgeons, otolaryngologists-head and neck surgeons and other skull base surgeons who are interested in learning endoscopic endonasal surgery of the skull base, pituitary fossa, orbit and craniocervical junction.

# FACULTY

## COURSE DIRECTORS

**Ricardo L. Carrau, MD, FACS**

*Professor*

Department of Otolaryngology-  
Head and Neck Surgery\*

**Bradley A. Otto, MD**

*Assistant Professor*

Department of Otolaryngology-  
Head and Neck Surgery\*

**Daniel M. Prevedello, MD**

*Associate Professor*

Department of Neurological  
Surgery\*

## THE OHIO STATE UNIVERSITY FACULTY

**Amit Agrawal, MD, Associate Professor**

Department of Otolaryngology-Head and Neck Surgery\*

**Claudia Kirsch, MD, Associate Professor of Neuroradiology and Otolaryngology\***

**Russell R. Lonser, MD, Professor and Chair**

Department of Neurological Surgery\*

**Matthew Old, MD, Assistant Professor**

Department of Otolaryngology-Head and Neck Surgery\*

**Enver Ozer, MD, Associate Professor**

Department of Otolaryngology-Head and Neck Surgery\*

**Eric Sauvageau, MD, Associate Professor**

Department of Neurological Surgery\*

**Theodoros N. Teknos, MD, Professor**

Department of Otolaryngology-Head and Neck Surgery\*

\*OSUCCC—James Columbus, Ohio

## ASSOCIATE FACULTY

### Clinical Fellows

Jon Chan, MD

Leo Ditzel Filho, MD

### Research Fellows

Lamia Buohliqah, MD

Ricardo Dolci, MD

Ali Jamshidi, MD

Jesada Kanjanaumporn, MD

Edward Kerr, MD

Paulo Mesquita Filho, MD

Rianmanee Sawayot, MD

Teck Siang Ng, MD

Kangsadarn Tanjararak, MD

Smita Upadhyay, MD

## GUEST FACULTY

**Amin B. Kassam, MD**

*Vice President, Neurosciences*

Medical Director, Neurosurgery

Aurora St. Luke's Medical Center

Milwaukee, Wisconsin

**Andrew S. Little, MD, FAANS**

*Co-Director*

Barrow Interdisciplinary Skull Base Program

Co-Director, Barrow Pituitary Center

Phoenix, Arizona

**C. Arturo Solares, MD**

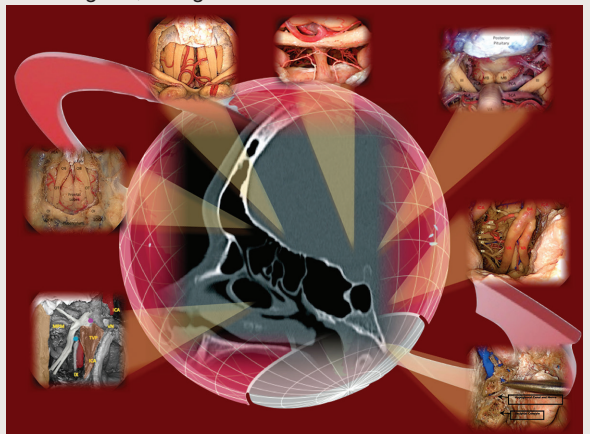
*Associate Professor*

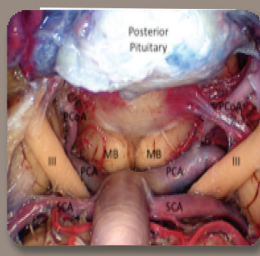
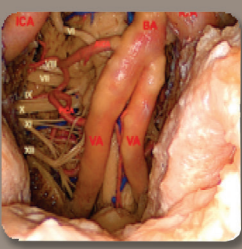
Otolaryngology-Head and Neck Surgery

Director, Center for Cranial Base Surgery

Georgia Regents University

Augusta, Georgia





## AGENDA

One month before the course, we will provide all registered participants with the following lectures in a video format. Participants will be responsible to watch these videos and be familiar with the material. The course will start at a level that assumes familiarity with the concepts exposed in the videos.

*Pre-course* Principles of Expanded Endoscopic Endonasal Approaches

*Pre-course* The Sinonasal Corridor

*Pre-course* Anatomy of the Sinonasal Tract & Skull Base (Extradural)

*Pre-course* Anatomy of the Cranial Nerves and Cerebral Circulation (Extradural)

*Pre-course* Reconstruction of the Skull Base: From Free Grafting to Vascularized Flaps

*Pre-course* Sagittal Plane EEA Modules I: Trans-sellar, Trans-planum, and Trans-cribiform

*Pre-course* Practical Approach to Imaging of the Cranial Base

*Pre-course* Endovascular Approach: How I Can Get You Out of Trouble (even deep, deep, deep... trouble)

*Pre-course* Sagittal Plane Modules II: Trans-clival, Trans-odontoid

*Pre-course* Trans-orbital Endonasal Approaches

*Pre-course* Endoscopic Anterior Skull Base Resection for Sinonasal Malignancy: Principles and Outcomes

*Pre-course* Anatomical Basis for the Transpterygoid Approaches

*Pre-course* Coronal Plane Modules

In addition, we will provide copies of the prosection videos, a dissection manual in PDF format, and references. Although not critical, we encourage the participants to go over this material before the course.

### THURSDAY, May 29, 2014 – DAY 1

6:45 am **Registration and Continental Breakfast**

7:15 **Welcome** – *Russell Lonser, Theodoros Teknos*

**Course Overview** – *Ricardo Carrau, Bradley Otto, Daniel Prevedello.*

8:00 **Round Table: Preoperative Planning: Diagnostic and Interventional Imaging**  
*Eric Sauvageau, Claudia Kirsch, Daniel Prevedello*

9:00 **Round Table: Creation and Evolution of a Skull Base Surgery Center**  
*C. Arturo Solares, Andrew Little, Amin Kassam*  
Interactive Panel All Faculty & Attendees

9:45 **Break**

10:00 **Round Table: Optimizing the Surgical Corridors and Adjunctive Techniques**  
*Daniel Prevedello, Leo Ditzel, Amin Kassam*  
Interactive Panel All Faculty & Attendees

11:00 **Challenges in Reconstruction of the Skull Base**  
*C. Arturo Solares, Andrew Little, Amit Agrawal*

12:00 pm **Lunch**

12:30 **3-D Endoscopic Skull Base Anatomy: The Sagittal Plane I** – *Daniel Prevedello*

1:00 **Round Table: Sagittal Plane EEA Modules I: Trans-sellar, Trans-planum, and Trans-cribiform** – *Amin Kassam, Andrew Little, Daniel Prevedello*

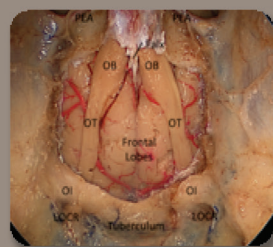
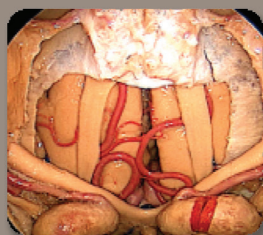
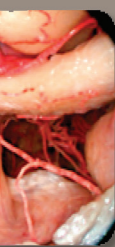
2:00 **Lab 1**

**Anatomical Prosection: The Sagittal Plane: The Nasoseptal Flap and Trans-sellar Approach** – *Ricardo Carrau, Bradley Otto, Daniel Prevedello*

2:45 **Anatomical Dissection**

6:30 **End of Day 1**

7:00-8:30 **Welcome Reception**



## FRIDAY, May 30, 2014 – DAY 2

- 7:00 am **Continental Breakfast**
- 7:30 **360-Degree Minimally Invasive Brain Surgery: Concepts & Practical Approach**  
*Amin Kassam*
- 8:15 **Live Surgery** – *Ricardo Carrau, Daniel Prevedello*  
*Commentary: Amin Kassam, Bradley Otto, C. Arturo Solares, Andrew Little*
- 11:00 **Panel: 360-Degree Skull Base Surgery: Presentation of Cases**  
*C. Arturo Solares, Andrew Little, Amin Kassam, Bradley Otto*
- 11:30 **Lunch**
- 12:00 pm **Lunch Lecture: 3-D Endoscopic Skull Base Anatomy: The Sagittal Plane II**  
*Daniel Prevedello*
- 12:30 **Round Table: Endoscopic Resection of Craniopharyngiomas: Ophthalmological and Endocrinological Considerations** – *Andrew Little, Amin Kassam*  
Interactive Panel All Faculty & Attendees
- 1:15 **Dilemmas with Meningiomas of the Anterior Cranial Base: Endonasal or Transcranial**  
**Moderator:** *Daniel Prevedello*  
Interactive Panel All Faculty & Attendees
- 2:15 **Lab 2**  
**Anatomical Prosection: Sagittal Plane II – Trans-planum, Trans-cribiform**  
*Ricardo Carrau, Bradley Otto, Daniel Prevedello*
- 2:45 **Anatomical Dissection**
- 6:15 **End of Day 2**
- 7:00-10:00 **Course Dinner and Honored Guest: TBA**

## SATURDAY, May 31, 2014 – DAY 3

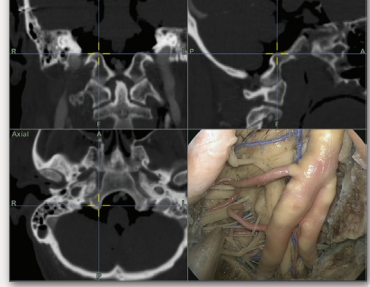
- 7:00 am **Continental Breakfast**
- 7:30 **3-D Endoscopic Skull Base Anatomy: Coronal Plane** – *Daniel Prevedello*
- 8:15 **Round Table: When the First Chance is the Best and Maybe the Only Chance: Endoscopic Treatment of Malignancies and Complex Lesions**  
*Matthew Old, C. Arturo Solares, Amin Kassam*  
Interactive Panel All Faculty & Attendees
- 9:15 **Round Table: Expanding to the Coronal Plane**  
*Daniel Prevedello, C. Arturo Solares, Ricardo Carrau*  
Interactive Panel All Faculty & Attendees
- 10:15 **Break**
- 10:45 **Prevention and Management of Complications Optimizing QOL**  
*Ricardo Carrau, Andrew Little, C. Arturo Solares*  
Interactive Panel All Faculty & Attendees
- 11:30 **Lunch**
- 12:00 pm **New Technologies: Robotic Applications in Skull Base Surgery** – *Enver Ozer*  
**What's New in Imaging and Optical Technologies** – *Amin Kassam*
- 12:45 **Lab 3**  
**Anatomical Prosection: Trans-clival, Trans-nasal Odontoidectomy** – *Ricardo Carrau, Bradley Otto, Daniel Prevedello*  
**Anatomical Prosection: Trans-orbital Approaches**  
*Ricardo Carrau, Bradley Otto, Daniel Prevedello*  
**Anatomical Prosection: Transpetrous Approaches & Infratemporal Fossa and Extranasal Reconstructive Flaps** – *Ricardo Carrau, Bradley Otto, Daniel Prevedello*
- 2:30 **Anatomical Dissection**
- 6:00 **Light Supper**
- 8:30 **Course Adjourns**

# COURSE LOCATION & HOTEL ACCOMMODATIONS



## Hilton Columbus at Easton

3900 Chagrin Drive • Columbus, OH 43219



For hotel accommodations, call (614) 414-5000, 800-HILTONS or (800) 445-8667. Mention “Endoscopic Skull Base Surgery Course” to get a special rate of \$171 per night plus taxes. Cutoff date to get the special rate is 5-7-14. Self Parking at the hotel is free. Valet Parking \$10 per day.

## DIRECTIONS TO THE HOTEL FROM THE AIRPORT

[www.hiltoncolumbus.com/Location/mapanddirections.aspx](http://www.hiltoncolumbus.com/Location/mapanddirections.aspx)

## DIRECTIONS FROM CMH TO HOTEL AND EASTON TOWN CENTER

Head North on 3rd street to 670 East to 270 North take exit #33 (Easton). Left at the top of the ramp onto Easton Way. Through two lights. Take first right after second light onto Chagrin Drive. Right into hotel front entrance.

## AIRPORT TRANSPORT OPTIONS

**Hilton Airport Shuttle:** Complimentary shuttle service operates 7 days a week from 6 am to 10:30 pm. The hotel shuttle pick-up area is just outside the baggage claim area. Upon arrival at the airport, go to the shuttle pick up area and call 614-414-5000 from your cell phone. Tell the operator you need transportation to the Hilton. The driver will be contacted and give the ETA of the shuttle.

**Limousine:** Minimum charge is approximately \$45

**Taxi:** Minimum charge is approximately \$25 one way

## LOCAL AIRPORT

### Port Columbus International Airport (CMH)

- *Distance from hotel:* 4 mi.
- *Drive time:* 10 min.

## ATTIRE

**Business casual.** Please bring your own scrubs. We will provide disposable gowns. Dress warmly, as rooms must be kept at 60° F.

## ACCREDITATION STATEMENT

The Ohio State University Center for Continuing Medical Education (CCME) is accredited by the Accreditation Council for Continuing Medical Education (ACCME®) to provide continuing medical education for physicians.

## AMA CREDIT DESIGNATION STATEMENT

The Ohio State University Center for Continuing Medical Education designates this live activity for a maximum of 32.5 *AMA PRA Category 1 Credit(s)*™. Physicians should claim only the credit commensurate with the extent of their participation in the activity.

## ACKNOWLEDGEMENT

This course is supported in part by educational grants from the following companies at press time: KARL STORZ Endoscopy-America, KLS Martin Group, Medtronic, NICO Corporation, Stryker.

In accordance with the Americans with Disabilities Act, The Ohio State University seeks to make sure this conference is accessible to all. If you have a disability that might require special accommodations, please contact Pat Fitzwater at 805-300-9154.

# REGISTRATION

## State-of-the-Art Endoscopic Skull Base Surgery A HANDS-ON COURSE

May 29-May 31, 2014

TUITION: \$3,000 Lectures and Lab • \$5,000 Team of 2 • \$1,500 Didactic Only

**SPACE IS LIMITED!** Please print clearly.



SPECIALTY

DEGREE

NAME (FIRST, MIDDLE, LAST)

ADDRESS

CITY

PROVINCE/STATE

POSTAL/ZIP CODE

(AREA CODE) BUSINESS PHONE

(AREA CODE) BUSINESS FAX

EMAIL

DIETARY RESTRICTIONS

## PAYMENT

- Check enclosed payable to: Academic Event Management  
 Visa     MasterCard     Discover     American Express

Card Number

Expiration

Signature

One month before the course, we will provide all registered participants with the following lectures in a video format. Participants will be responsible to watch these videos and be familiar with the material. The course will start at a level that assumes familiarity with the concepts exposed in the videos. The participants may keep the lectures for future reference.

### Pre-course Video-Lectures

Day 1-Principles of Expanded Endoscopic Endonasal Approaches

Day 1-The Sinonasal Corridor

Day 1-Anatomy of the Sinonasal Tract & Skull Base (Extradural)

Day 1-Anatomy of the Cranial Nerves and Cerebral Circulation (Extradural)

Day 1-Reconstruction of the Skull Base: From Free Grafting to Vascularized Flaps

Day 1-Sagittal Plane EEA Modules I: Trans-sellar, Trans-planum, and Trans-cribiform

Day 1-Practical Approach to Imaging of the Cranial Base

Day 1-Endovascular Approach: How I Can Get You Out of Trouble (even deep, deep, deep... trouble)

Day 2-Sagittal Plane Modules II: Trans-clival, Trans-odontoid

Day 3-Trans-orbital Endonasal Approaches

Day 3-Endoscopic Anterior Skull Base Resection for Sinonasal Malignancy: Principles and Outcomes

Day 3-Anatomical Basis for the Transpterygoid Approaches

Day 3-Coronal Plane Modules

In addition, we will provide copies of the prosection videos, a dissection manual in PDF format, and references. Although not critical, we encourage the participants to go over this material before the course.

## CANCELLATIONS

Cancellations must be received in writing by April 15, 2014 and will be subject to a \$200 processing fee. No refunds will be given after that date. Academic Event Management reserves the right to cancel, discontinue or reschedule this program at any time and will assume no financial obligation to the registrants in the event of a cancellation. In case of cancellation, registration fees will be refunded in full.

Send completed enrollment form to: **Academic Event Management**

**ONLINE**

www.academiceventmanagement.com

**FAX**

805.494.1103

**PHONE**

805.300.9154

**MAIL**

1396 Rancho Lane

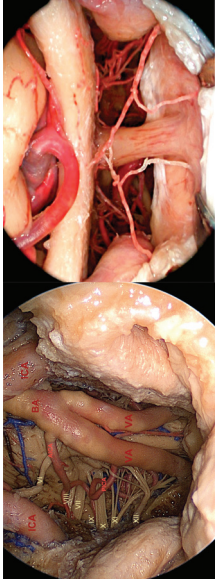
Thousand Oaks, CA 91362





Pat Fitzwater  
1396 Rancho Lane  
Thousand Oaks, CA 91362

PRESORTED  
STANDARD  
U.S. POSTAGE  
**PAID**  
Van Nuys, CA  
PERMIT NO. 1167



**State-of-the-Art Endoscopic Skull Base Surgery**  
A HANDS-ON COURSE

**May 29-May 31, 2014**  
**Hilton Columbus at Easton • Columbus, Ohio**

The James

