

Introducing ...

6 Pillar Approach

Parafascicular Surgery of the White Matter

With emphasis on:

Economic Resource Optimization Through Surgical Biometrics

September 12-13, 2014

Aurora Research Institute

Aurora Sinai Medical Center Campus
Milwaukee Heart Institute Building
960 N. 12th Street, Lower Level
Milwaukee, WI 53233



Course Director:

Amin B. Kassam, MD

Vice President, Neurosciences • Medical Director, Neurosurgery
Aurora St. Luke's Medical Center • Milwaukee, Wisconsin

Description

The 6 Pillar Approach is the result of a recent convergence of technologies to manage abnormalities affecting the intraaxial subcortical white matter space. This confluence of technologies has led to development of minimally invasive strategies via progressively smaller surgical corridors to reach and treat abnormalities in a targeted manner. Integration of these technologies is driven by a need to establish clinical and economic value in the delivery of precise targeted treatment in an efficient manner. This value is articulated through Surgical Biometrics.

A recorded surgical demonstration of **The 6 Pillar Approach** for **parafascicular** surgery of the white matter will be shown, and participants may interact with the surgeons and other members of the faculty.

The course features a hands-on simulation lab session.

Target audience: Neurosurgeons, neuroradiologists and neurologists interested in developing further knowledge of subcortical intraaxial space and white matter tractography, surgical biometrics and resource optimization.

Aurora Faculty

Neil Guenther, MD

Attending Anesthesiologist
Aurora St. Luke's Medical Center
Milwaukee, Wisconsin

John Wlodarski, MD

Attending Anesthesiologist
Aurora St. Luke's Medical Center
Milwaukee, Wisconsin

Guest Faculty

Mohamed Labib, MDCM, FRCS (C)

University of Ottawa
Ottawa, Ontario
Canada

Ronald L. Young II, MD

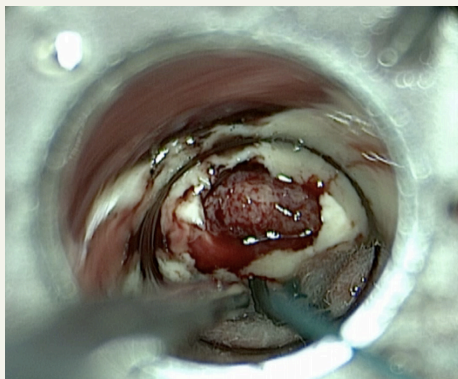
Director Pediatric Neurosurgery
St. Vincent Indianapolis
Indianapolis, Indiana

Objectives

At the conclusion of the course, participants should be able to:

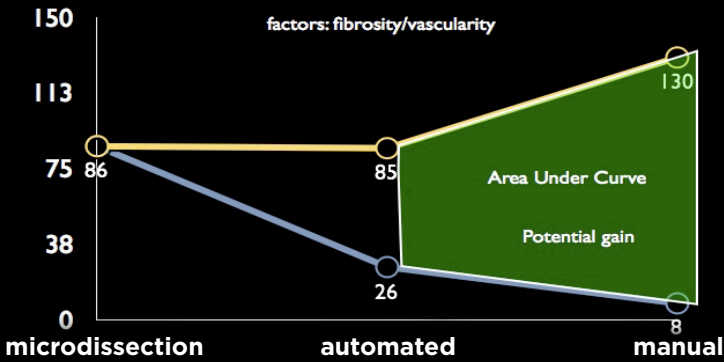
Parafascicular Surgery of the Subcortical Intraaxial Space

- Appraise and integrate the evolving technology platforms of white matter fascicular image interpretation and trajectory planning and subcortical anatomy
- Assess principles and techniques of optimum cannulation pathways - **Parafascicular Surgery**
- Analyze the advantages (depth of field and tissue differentiation) of the Exoscope
- Apply the techniques of automation to improve performance curves and efficiency during resection phase for both MIS and conventional craniotomy corridors
- Apply techniques to optimize tissue capture and viability
- Examine the current immune-targeted molecular treatments available and the potential ability to deliver these in situ - "The 6th Pillar"
- Examine the limitations of corridor brain port approaches
- Interpret the value of the 6 Pillar parafascicular approach in comparison to other forms of surgical interventions
- Examine the efficiency factors that impact Surgical Biometrics analysis



○ 23 (lesser efficiency) ○ 27 (greater efficiency)

Comparison by Minutes



Conflict of Interest Disclosure Statement

It is the policy of Aurora Health Care Office of Continuing Education to ensure balance, independence objectivity, and scientific rigor in all of its sponsored education activities. All participating faculty, course directors, and planning committee members are required to disclose to the program audience any financial relationships related to the subject matter of this program. Disclosure information is reviewed advance in order to manage and resolve any possible conflicts of interest. All faculty and planning committee members have attested that their financial relationships do not affect their ability to present well-balanced evidence-based content for this activity. Specific disclosure information for each course faculty will be shared with the audience prior to the faculty's presentation.

Accreditation

Aurora Health Care is accredited by the Wisconsin Medical Society to provide continuing medical education for physicians.

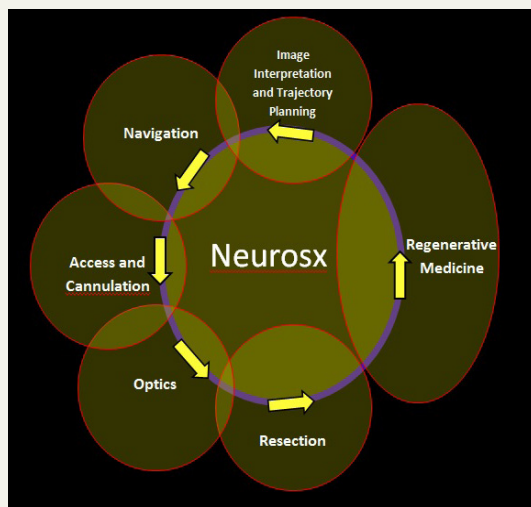
Aurora Health Care designates this live activity for a maximum of 18.75 *AMA PRA Category 1 Credits™*. Physicians should claim only the credit commensurate with the extent of their participation in the activity.

Acknowledgement

This course is supported in part by educational grants from the following companies at press time:

- Hitachi Aloka Medical, Ltd.
- KARL STORZ Endoscopy-America
- KLS Martin Group
- NICO Corporation
- Stryker
- Synaptive Medical Inc.

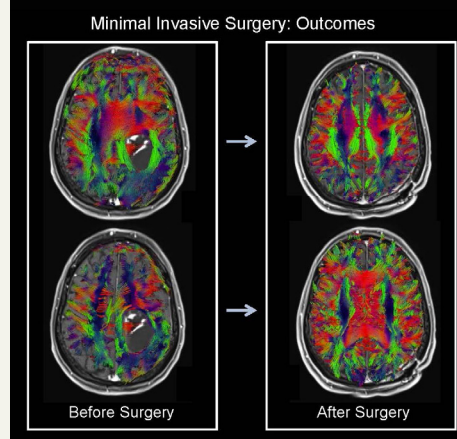
*Use of the NICO BrainPath is limited to the following indication for use:
To provide access and visualization of the surgical field during brain and spinal surgery.*



Agenda

Friday, September 12

- 6:45 a.m. Shuttle Departs from The Marriott Hotel
- 7:00 Registration and Breakfast
- 7:15 Welcome and Housekeeping
- 7:30 Introduction - A Systems Approach: Principles Integrating the 6 Pillars for Parafascicular White Matter Minimally Invasive Subcortical Access & Cannulation
- 8:30 Principles of White Matter Anatomy and Image Interpretation
- 9:30 Break
- 9:45 Integration with Navigation: Nuances of Trajectory Planning/Optimization
- 10:45 Principles of Access and Cannulation
- 12:00 p.m. Lunch
- 12:30 **Set up/Lab 1**
- 2:00 Break
- 2:15 Understanding the Advantages of Existing and Evolving Optics Platforms
- 3:00 Optimizing Efficiency and Precision During all Phases of resection - Impact of Automation and the Lessons Learned from ophthalmology
- 4:00 **Set up/Lab 2**
- 5:30 End of Day 1 - Shuttle Departs to The Marriott Hotel
- 6:45 Shuttle Departs from The Marriott Hotel to Dinner (meet in hotel lobby)
- 7:00-10:30 Course Dinner



Saturday, September 13

- 6:45 a.m. Shuttle Departs from The Marriott Hotel
- 7:00 Breakfast
- 7:30 Physics of Imaging and the Application of Physics of Imaging
- 9:00 First Case Selection Matrix
Mohamed Labib, MDCM, FRCS (C)
- 10:00 Break
- 10:15 Anesthesia for Awake Craniotomies
Neil R. Guenther, MD and John C. Wlodarski, MD
- 11:15 Surgical Biometrics: Principles of Value Added Analysis & Hospital Efficiency/Patient Flow
Eric Alenius, MBA and Bruce Radcliff, MBA
- 12:30 p.m. Lunch
- 1:00 Parafascicular Surgery Experience
Ronald L. Young II, MD
- 2:00 Introduction to MIS ICH Application Utilizing the Pillar Approach
- 2:45 **Set up/Lab 3**
- 4:00 Regenerative Medicine and Tissue Harvest - Primer on Existing Pharmacotherapy and Progenitor/Stem Cell Therapy
- 5:30 Course Adjourns - Shuttle Departs to The Marriott Hotel

Location

Aurora Research Institute
Aurora Sinai Medical Center Campus
Milwaukee Heart Institute Building
960 N. 12th Street, Lower Level
Milwaukee, WI 53233

Local airport:
General Mitchell International Airport (MKE)



Hotel Reservations

A block of rooms has been reserved at:
Milwaukee Marriott Downtown
323 E. Wisconsin Avenue • Milwaukee, WI 53202

Call 877-224-1990 and mention the "6 Pillar Course" to get a special rate of \$139 per night, plus taxes. Cutoff date to get the special rate is August 20, 2014. Transportation will be provided each day from the Marriott Hotel to the course. Hotel rooms include complimentary internet.

Mail completed enrollment form to:

Academic Event Management
1396 Rancho Lane • Thousand Oaks, CA 91362
T 805-300-9154 • F 805-494-1103

To register online, go to
www.academiceventmanagement.com



Refunds

No refunds will be given if a registration is cancelled. However, tuition can be rolled over to the next course. Academic Event Management reserves the right to cancel, discontinue or reschedule this program at any time and will assume no financial obligation to the registrants in the event of a cancellation. In case of cancellation, registration fees will be refunded in full.

Attire

Course and Course Dinner: Business casual (You may bring your own scrubs for the lab portion, but not required)

Registration

The 6 Pillar Approach for Comprehensive Management of Subcortical Lesions

Tuition: \$995 **Space is limited!** Please print clearly.

Specialty _____ Degree _____

Name (First, Middle, Last) _____

Address _____ City _____ Province/State _____ Postal/ZIP Code _____

(Area code) Business Phone _____ (Area code) Business Fax _____

Email _____

Dietary Restrictions: _____

Payment

- Check enclosed (Payable to: **Academic Event Management**)
 Visa MasterCard Discover American Express

Card No. _____ Expiration Date _____

Signature _____

In accordance with the Americans with Disabilities Act, Aurora Health Care seeks to make sure this conference is accessible to all. If you have a disability that might require special accommodations, please contact Pat Fitzwater at 805-300-9154.